

Б

N 524

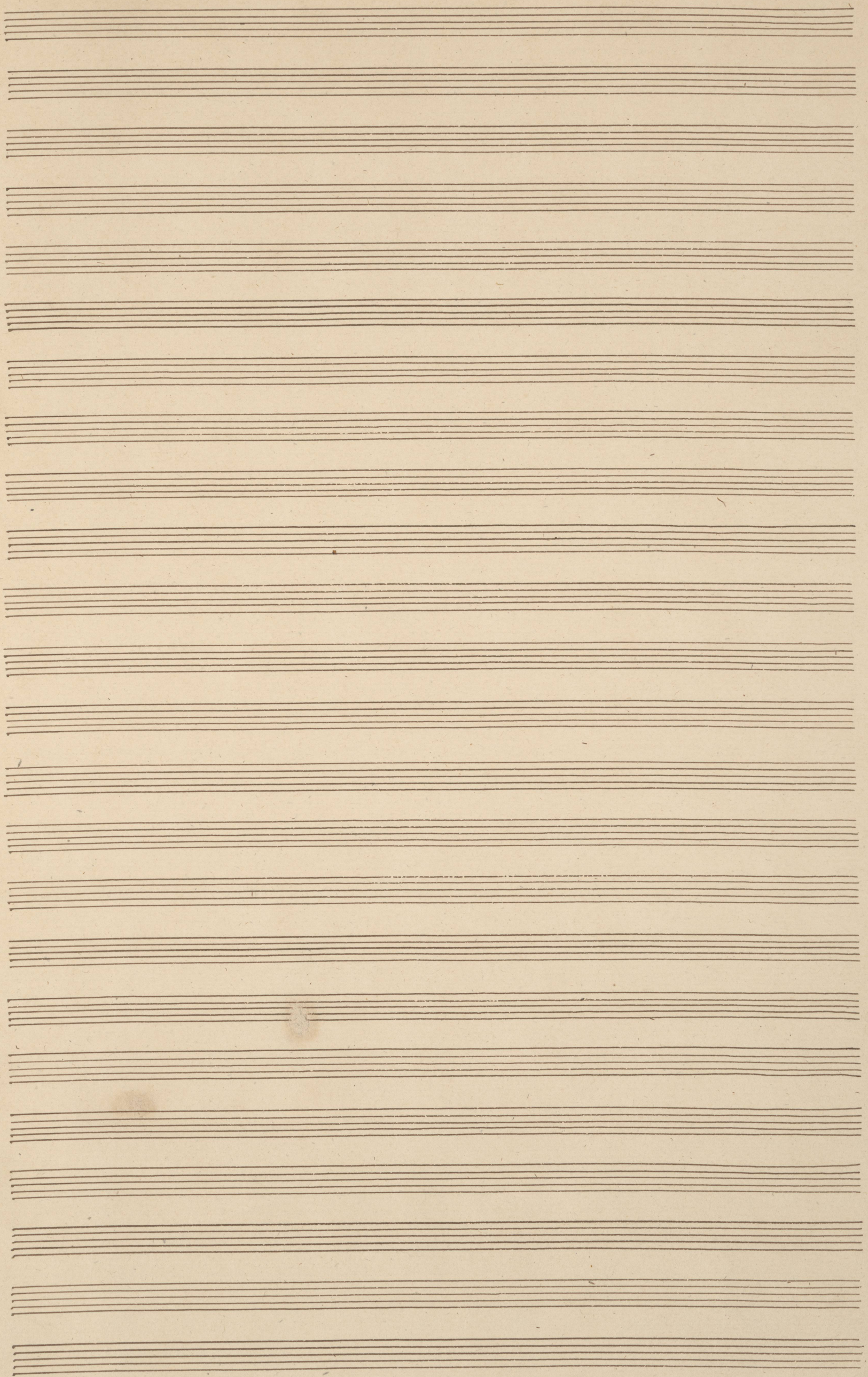
32. Фр.

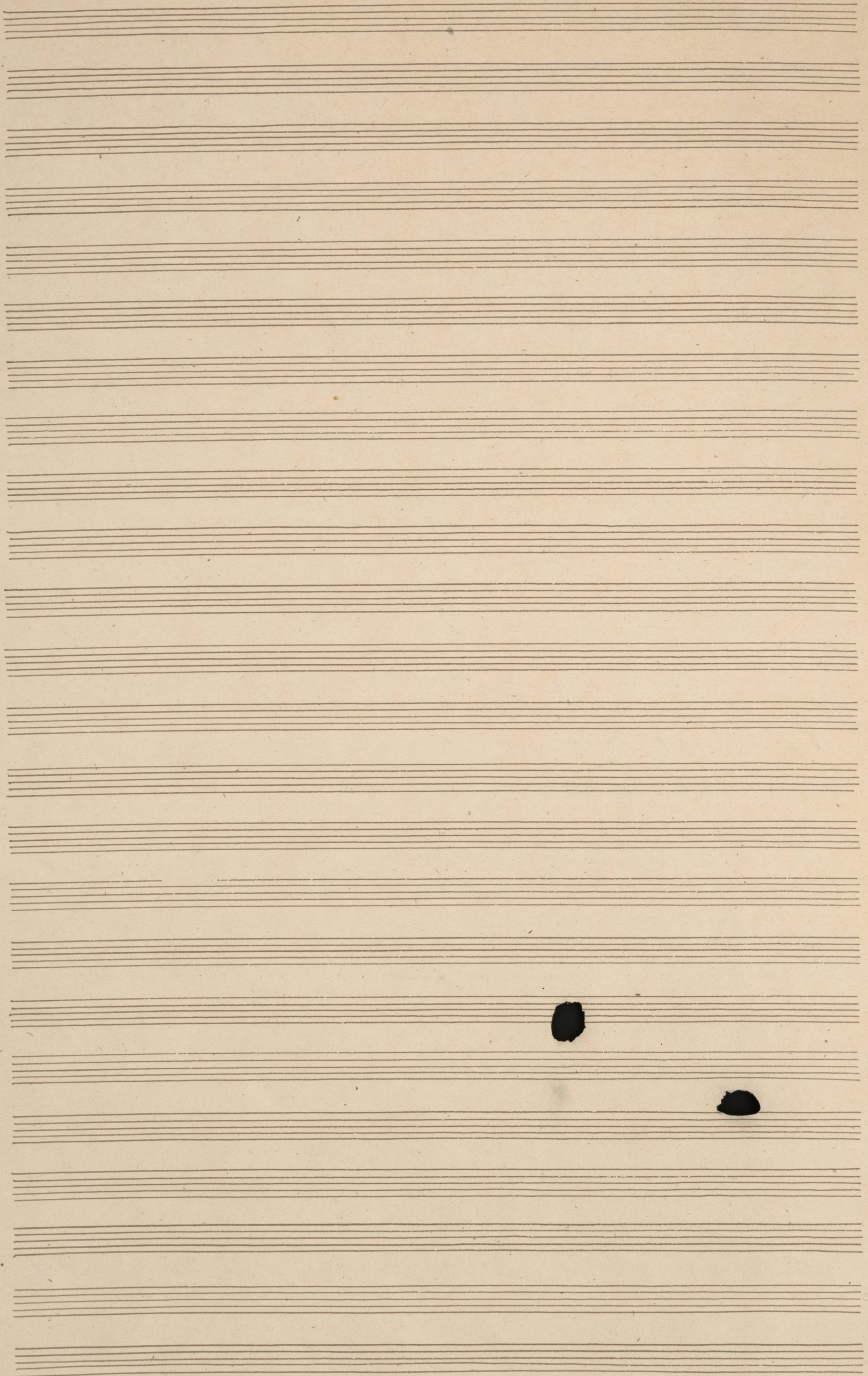
Trio nell'opera
Il matrimonio Legretta



Cimarosa.







#1663.

Flaut 7

Oboi 7

Clarin (A) 7

Fagotti 7

2 Corni (G) 7

2 Trombe (G) 7

Carolina 2

Licetta 7

Fidulini 7

V. I 7

V. II 7

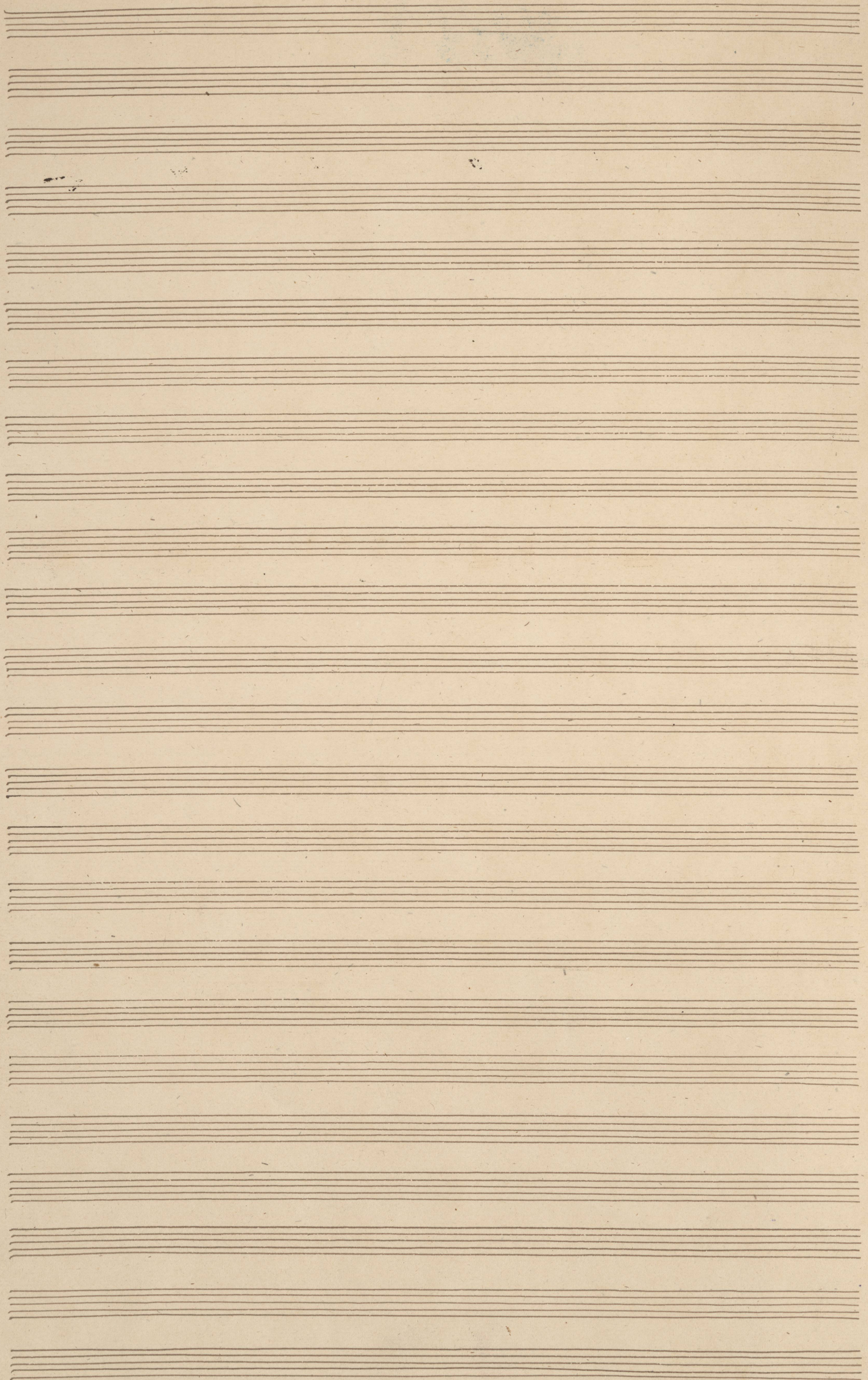
Violle 7

Cello 7

Cb. 7

col Cello

1 2 3 4 5



6 7 8 9 10 11

Empty musical staves for measures 6 through 11, with no notation present.

Handwritten musical notation for measure 6, featuring a single staff with a sequence of notes and rests.

Handwritten musical notation for measures 7 through 11. This section includes multiple staves with complex rhythmic patterns, including sixteenth and thirty-second notes, and various rests. A double bar line is present at the end of measure 10.

Empty musical staves at the bottom of the page, with no notation present.

Handwritten musical score for measures 18, 19, 20, 21, 22, and 23. The notation includes treble clefs, a key signature of one sharp (F#), and various rhythmic values. Measure 18 features a circled bass clef. Measure 19 includes a treble clef with a sharp sign. Measure 20 is mostly blank with a small '20' written above. Measures 21, 22, and 23 are also blank with their respective measure numbers written above.

A single line of handwritten musical notation, likely a vocal line, featuring a treble clef, a key signature of one sharp, and a series of notes with slurs and accents.

Handwritten musical score for measures 20, 21, 22, and 23. Measure 20 is mostly blank with a '20' written above. Measures 21, 22, and 23 contain multiple staves of music, including treble and bass clefs, with some notes and slurs. The notation is dense and includes various rhythmic markings.

Handwritten musical score for measures 12 through 17. The score consists of five staves. Measures 12, 13, 14, and 15 are mostly blank. Measure 16 begins with a treble clef, a key signature of one flat, and a common time signature. It contains several measures of music with notes and rests. Measure 17 continues the music and includes the instruction *meno mosso*. There are some handwritten annotations above the staves, including the number '16' and '17'.

A single staff of handwritten musical notation, likely a bass line or a specific instrumental part. It contains a series of rhythmic patterns and notes across several measures.

Handwritten musical score for measures 18 through 22. The score consists of five staves. Measures 18 and 19 feature dense, rapid sixteenth-note passages. Measures 20 and 21 contain notes with slurs and some rests. Measure 22 concludes the section with notes and rests. The instruction *meno mosso* is written below the staves in measure 22. There are also some handwritten annotations above the staves.

This image shows a page of handwritten musical notation on aged, yellowed paper. The score is organized into several systems of staves. The top system contains measures 24, 25, 27, 28, and 29. Measure 24 is marked with a large '24' and a fermata. Measures 25, 27, 28, and 29 are marked with their respective measure numbers above the staff. The notation includes various rhythmic values, accidentals, and dynamic markings such as 'p' (piano) and 'f' (forte). A large bracket spans across measures 27, 28, and 29. Below this system, there is a single staff with a complex rhythmic pattern, followed by another system of staves with more musical notation. The bottom of the page shows several empty staves. The number '5' is written in the top right and bottom right corners of the page.

Handwritten musical notation on a single staff, showing a few notes and a sharp sign.

A system of six staves of handwritten musical notation. The first two staves contain a large section of crossed-out notes. The remaining four staves contain musical notation with notes and stems.

1. 2. ● 3.

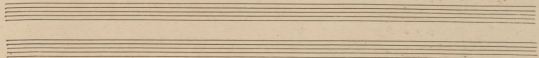
Two staves of handwritten musical notation, showing a melodic line and a bass line.

A single staff of handwritten musical notation with a series of notes and stems.

30

A system of six staves of handwritten musical notation. The first two staves contain a large section of crossed-out notes. The remaining four staves contain musical notation with notes and stems.

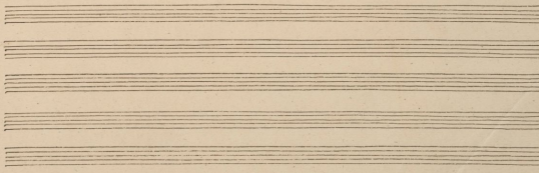
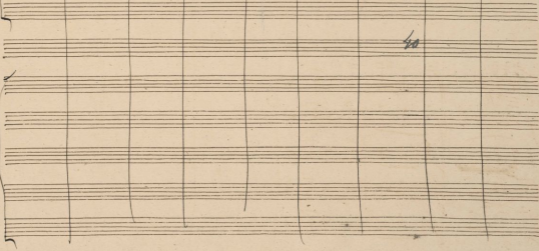
A series of empty musical staves at the bottom of the page.

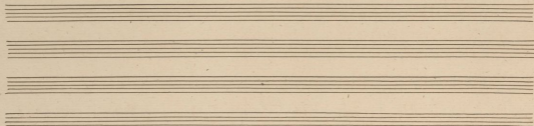


4 . 5 6 7 8 9 10 11 12

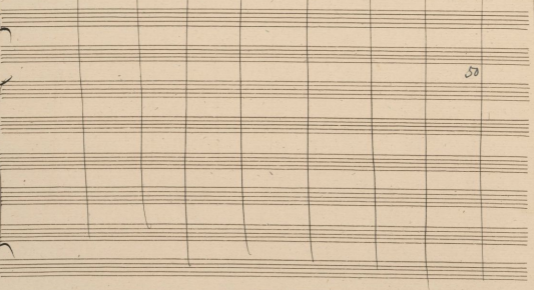
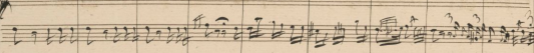


Musical notation on a single staff, including a treble clef, a key signature of one sharp (F#), and a sequence of notes and rests.

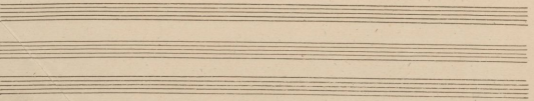




13 14 15 16 17 18 19 20 21

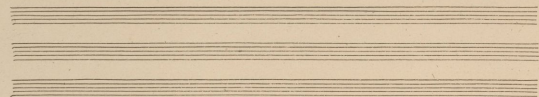


50

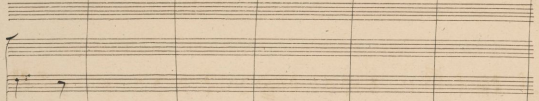


22 23 24 25 26 27 28 29 30 31.

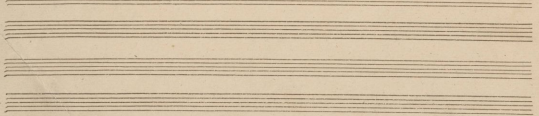
The image shows a page of handwritten musical notation on ten staves. At the top, a series of numbers 22 through 31 are written across the first staff. Below this, the musical notation begins on the fourth staff. It features a treble clef, a key signature of one flat (B-flat), and a 2/4 time signature. The notation includes eighth and sixteenth notes, rests, and a fermata over a final note. The sixth staff contains the number '60' written in the right margin.

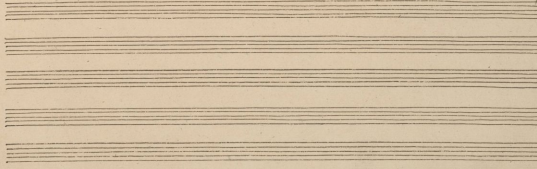
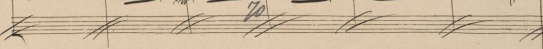
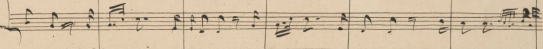
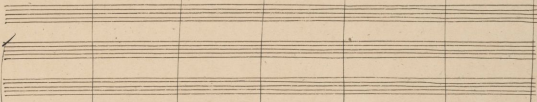
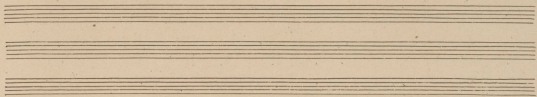


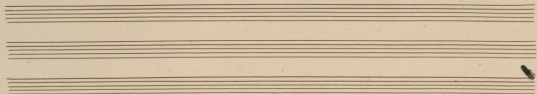
Handwritten musical score for the first system, featuring multiple staves with notes, rests, and dynamic markings such as *mf*, *mo*, and *mo!*.



Handwritten musical score for the second system, including a *Tubalme* part and a *Col Cello* part. The *Col Cello* part is marked with multiple slashes, indicating it is to be played. Dynamic markings include *mf* and *fin*.



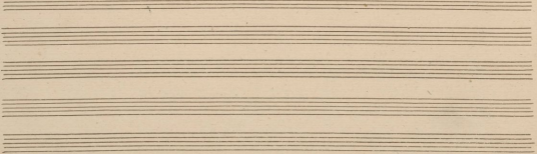




Handwritten musical notation on three staves. The notation includes notes, rests, and stems, with some markings on the left side of the staves.

Handwritten musical notation on a single staff, featuring a complex melodic line with various note values and rests.

Handwritten musical notation on four staves. The notation includes notes, rests, and stems, with some markings on the left side of the staves. The word "aria" is written vertically between the second and third staves. The bottom two staves have diagonal slashes indicating a section cut-off.



Handwritten musical score on page 13, featuring multiple staves with complex notation, including notes, rests, and dynamic markings.

The score is organized into several systems of staves:

- Top System:** Consists of two staves. The upper staff contains a melodic line with notes and rests, marked with *me* and *f*. The lower staff contains a bass line with notes and rests, marked with *me*, *mf*, and *p*.
- Middle System:** A single staff containing a melodic line with notes and rests, marked with *mf*.
- Bottom System:** Consists of five staves. The top staff is a melodic line with notes and rests, marked with *mf*. The four staves below it appear to be a multi-measure rest or a complex rhythmic pattern, marked with *mf* and *p*.

The notation includes various note values, rests, and dynamic markings such as *me*, *mf*, *f*, and *p*. There are also some handwritten annotations and symbols, including a large '80' in the middle system.

Handwritten musical score, first system. It consists of five staves. The first three staves are for a piano accompaniment, showing complex chordal textures and melodic lines. The fourth and fifth staves appear to be for a vocal line, with lyrics written below the notes. The notation includes various musical symbols such as clefs, time signatures, and dynamic markings.

Handwritten musical score, second system. It consists of two staves. The first staff contains a melodic line with some rests, and the second staff contains a bass line. The notation is clear and legible.

Handwritten musical score, third system. It consists of five staves. The first three staves are for a piano accompaniment, similar to the first system. The fourth and fifth staves are for a vocal line. The number '88' is written above the first staff of this system. The notation includes various musical symbols such as clefs, time signatures, and dynamic markings. The word 'Cello' is written at the bottom of the system.

Handwritten musical notation on three staves. The top staff uses a soprano clef, the middle an alto clef, and the bottom a bass clef. The notation consists of chords and melodic lines with stems and beams.

Handwritten musical notation on a single staff with a treble clef. It features a series of rhythmic notes and rests, possibly representing a specific melodic fragment or exercise.

Handwritten musical notation on four staves. The top three staves contain complex rhythmic patterns with stems and beams. The bottom staff contains a series of diagonal slashes, likely indicating a specific rhythmic pattern or a section to be repeated.

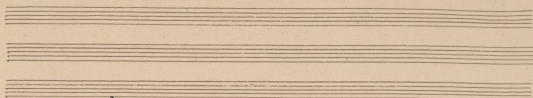
Handwritten musical notation at the top of the page, including a treble clef and a key signature of one sharp (F#).

Musical notation for the first system, featuring a treble clef, a key signature of one sharp, and a 4/4 time signature. The notation includes notes, rests, and dynamic markings such as *mf* and *ff*. The system concludes with a double bar line and a repeat sign.

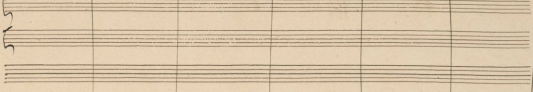
Musical notation for the second system, consisting of a single staff with a treble clef and a key signature of one sharp. The notation includes notes and rests.

Musical notation for the third system, featuring a treble clef, a key signature of one sharp, and a 4/4 time signature. The notation includes notes, rests, and dynamic markings such as *cresc*. The system concludes with a double bar line and a repeat sign.

Empty musical staves at the bottom of the page, including a treble clef and a key signature of one sharp.

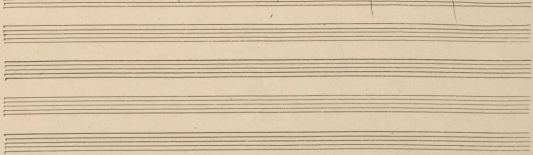


Handwritten musical notation for the first system, consisting of three staves. The notation includes clefs, a key signature of one sharp (F#), and various rhythmic values. The first staff has a treble clef, the second a soprano clef, and the third an alto clef. The notes are arranged in a complex, multi-measure structure.



A single staff of handwritten musical notation, likely a vocal line, featuring a treble clef, a key signature of one sharp, and a series of rhythmic notes with stems.

A complex system of handwritten musical notation, including a grand staff (treble and bass clefs) and a lower staff. The notation is dense with notes, stems, and clefs, indicating a multi-instrument or multi-voice arrangement. A double bar line is visible in the middle of the system.



Handwritten musical score for a multi-staff instrument, possibly a harpsichord or keyboard. The score consists of six staves. The first three staves are on the left, and the last three are on the right. The notation includes various note values, rests, and dynamic markings such as *p* and *f*. There are large curved lines connecting notes across staves in the right-hand section.

A section of the score featuring a prominent wavy line on the top staff, which may represent a tremolo or a specific performance technique. The word *Cantabile* is written above the staff. Below this, there are several staves with rhythmic notation, including notes with stems and flags.

A section of the score with dense, complex notation. It features multiple staves with intricate patterns of notes and rests. The notation includes many beamed notes and rests, suggesting a fast or technically demanding passage. There are also some markings that look like *f* and *p*.

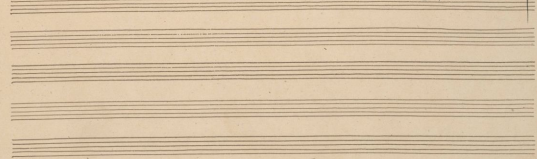
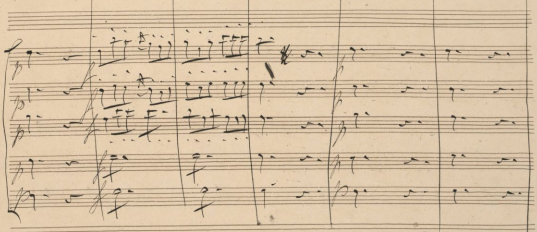
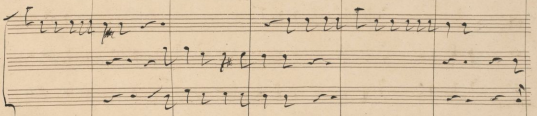
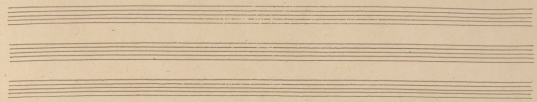
A section of the score consisting of several empty musical staves, indicating a gap or a section that has not been fully written or is left blank.

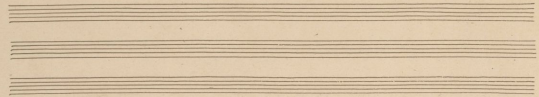
Handwritten musical score on page 19. The score consists of several systems of staves. The top system shows a single staff with notes and rests, followed by a section with heavy scribbles. The second system contains three staves with rhythmic notation, including a treble clef and a common time signature. The third system features a grand staff with a treble clef, a common time signature, and various musical notations, including a section with diagonal slashes. The bottom of the page shows several empty staves.

Handwritten musical score for five staves. The first staff is marked *f* *cresc*. The second and third staves are marked *cresc*. The fourth and fifth staves are marked *cresc* and *mf* respectively. The notation includes various rhythmic values and dynamic markings.

Handwritten musical score for three staves, all marked *cresc*. The notation consists of rhythmic patterns and notes.

Handwritten musical score for five staves, all marked *cresc*. The notation includes various rhythmic values and dynamic markings.

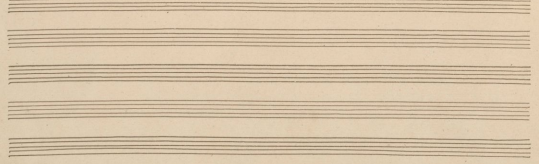




Handwritten musical notation on a single staff. It begins with a treble clef and a key signature of one flat. The notation consists of a series of eighth notes, some grouped with slurs. In the upper right corner, there are three small, vertically aligned musical fragments, possibly representing chords or specific rhythmic patterns.

Handwritten musical notation on three staves. The top staff features a series of wavy lines, possibly representing a melodic line or a specific performance instruction. The middle and bottom staves contain rhythmic notation, including eighth and sixteenth notes, with some rests and dynamic markings.

Handwritten musical notation on five staves. The notation is dense and includes various dynamic markings such as *arco*, *arg*, *rit*, *ritto*, *ritard*, and *p*. The notation includes rhythmic patterns, slurs, and some specific notes. The bottom two staves appear to be bass lines or accompaniment parts.



Handwritten musical score for the first system, featuring five staves. The staves are labeled on the left as follows: *Flute*, *Clarinet*, *Clarinet*, *Cello*, and *Bass*. The notation includes various musical symbols such as notes, rests, and dynamic markings like *mf*.

Handwritten musical score for the second system, consisting of three staves. The notation includes rhythmic patterns and notes.

60

Handwritten musical score for the third system, featuring five staves. The staves are labeled on the left as follows: *Flute*, *Clarinet*, *Clarinet*, *Cello*, and *Bass*. The notation includes various musical symbols and dynamic markings like *mf*.

Handwritten musical score, first system. It consists of five staves. The top staff has a treble clef and a key signature of one sharp (F#). The second staff has a treble clef. The third staff has a bass clef. The fourth and fifth staves are empty. The notation includes various rhythmic values and dynamic markings such as *f*, *erac*, *cresc.*, and *erac.*. There are also some handwritten annotations like "p" and "f" near the notes.

Handwritten musical score, second system. It consists of three staves. The top two staves have treble clefs, and the bottom staff has a bass clef. The notation is dense with rhythmic patterns and includes dynamic markings like *f* and *erac*.

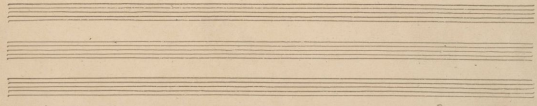
Handwritten musical score, third system. It consists of five staves. The top two staves have treble clefs, and the bottom three staves have bass clefs. The notation includes various rhythmic values and dynamic markings such as *f*, *erac*, *cresc.*, and *erac.*. There are also some handwritten annotations like "p" and "f" near the notes.

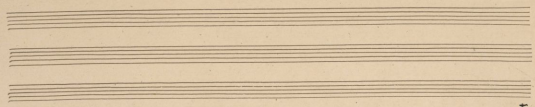


Handwritten musical notation on five staves. The first staff contains a treble clef, a key signature of one sharp (F#), and a common time signature (C). The notation includes various rhythmic values and melodic lines.

Handwritten musical notation on three staves. The notation continues with rhythmic patterns and melodic lines. A tempo marking of 80 is visible below the third staff.

Handwritten musical notation on five staves. The notation includes dynamic markings such as *mf* and *fff*. The word "Cello" is written at the bottom of the fifth staff, indicating the instrument for which the music is written.

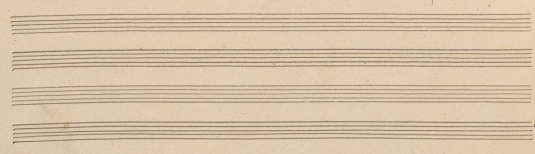




Handwritten musical notation on a single staff, featuring a treble clef and a key signature of one flat. The notation includes a series of eighth notes and rests, with some notes beamed together. A dynamic marking of *mf* is present. To the right, there is a small section of notation with a treble clef and a key signature of one flat, also marked *mf*.

Handwritten musical notation on three staves. The top staff has a treble clef and a key signature of one flat. The middle and bottom staves have bass clefs and a key signature of one flat. The notation consists of rhythmic patterns of eighth notes and rests. A dynamic marking of *mf* is visible.

Handwritten musical notation on five staves. The top staff has a treble clef and a key signature of one flat. The bottom four staves have bass clefs and a key signature of one flat. The notation is dense, with many notes beamed together. Dynamic markings include *mf* and *p cresc*.



Handwritten musical score for the first system. It consists of five staves. The top staff is a vocal line with notes and slurs. The second and third staves are piano accompaniment. The fourth and fifth staves are piano accompaniment with dynamic markings: *cresc*, *cresc*, *cresc*, and *cresc*. There are some corrections and scribbles in the piano parts.

Handwritten musical score for the second system, consisting of three staves. The notation is primarily rhythmic, with vertical stems and horizontal lines indicating note values and rests. There are some slurs and accents.

Handwritten musical score for the third system, consisting of three staves. The piano accompaniment is very dense with many notes, slurs, and some corrections. The notation is complex and appears to be a detailed transcription of a piano part.

105

ГЦММК
Фонд 88
Инв. 161
Пост. 559

МУЗЕЯ
№ 23
А. Н. П. САНКТ-ПЕТЕРБУРГА